

BioassayPlus Inc.

4510 Rhodes Dr. Windsor, Canada N8W 5K5

Certificate of Analysis

Important Note: Centrifuge before opening to ensure complete recovery of vial contents.

Product name: Recombinant Chlamydia pneumonia VD2-VD3 antigen

Catalog # : CP-VD2/3

Description: Recombinant Chlamydia pneumonia antigen is derived from VD2-VD3 region of its major outer membrane protein, this region is recognized by specific chlamydia pneumonia antibody, the recombinant chlamydia pneumonia D2-D3 protein has 206 amino acids with molecular size 22kDa, it forms monomer and dimer on SDS-PAGE gel, the dimer migrates at the molecular size 45 kDa. Its isoelectric point is 8.74.

Source: *E. coli*

Format: Purified, Liquid

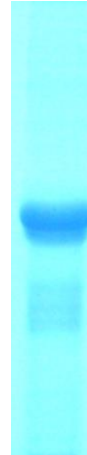
Purification: >95% pure on 10% SDS-PAGE (Coomassie blue stain)

Concentration: 1.45mg/ml (lot 02-2016)

Buffer: PBS with 25mM arginine

Application: Immunoassay

Storage: Upon receipt, store at -20°C, aliquote into small vial, some time arginine has white precipitation in freezing status, warming up with hand dissolves the precipitation.



C. Pneumonia VD2-VD3, dimer, 42kda, Lot 02-2016