

Bioassayplus Inc.

4510 Rhodes Drive. Windsor, Canada N8W 5K5

Certificate of Analysis

Important Note: Centrifuge before opening to ensure complete recovery of vial contents.

Product name: HIV2 envelope gp160

Catalog #: HIV2-gp160

Description: HIV2 gp160 protein contains HIV2 subtype A gp120 and gp36 sequence from amino acid 434 to 772, migrating at 42kDa on 10% SDS-PAGE. This antigen reacts to HIV2 antibody, it is usually coated on the membrane to capture the specific antibody from HIV2 sample. HIV2 samples collected in the house was tested positive by ELISA.

Source: *E. coli*

Format: Purified, Liquid

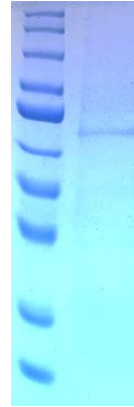
Purification: >90% pure (10% SDS-PAGE, Coomassie blue staining)

Concentration: 1.35mg/ml (lot: 0127-2024)

Buffer: PBS and 25mM K₂CO₃ with 1M urea

Applications: lateral flow and ELISA

Storage: store in 4°C for short time only, aliquot to avoid repeated freezing and thawing, store at -20°C.



HIV2 gp36	100ug	20ug	4ug	0.8ug	160ng	32ng	6ng	1.3ng/ml
HIV2 serum	1.752	1.704	1.651	1.43	1.412	1.137	0.96	0.847
Normal	0.466	0.263	0.359	0.339	0.341	0.232	0.21	0.224
Signal/BKG	3.759657	6.479087	4.598886	4.218289	4.140762	4.900862	4.571429	3.78125
HIV2 gp160	100ug	20ug	4ug	0.8ug	160ng	32ng	6ng	1.3ng/ml
HIV2 serum	1.632	1.162	1.216	0.557	0.191	0.024	0.011	0.012
Normal	0.828	0.116	0.161	0.239	0.282	0.203	0.251	0.0246
Signal/BKG	1.971014	10.01724	7.552795	2.330544	0.677305	0.118227	0.043825	0.487805