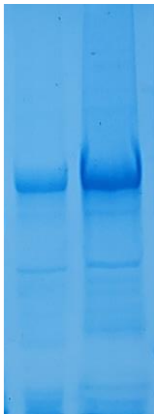


# Bioassayplus Inc.

4510 Rhodes Dr.. Windsor, Canada N8W 5K5

## Product Specification Sheet

- Important Note:** Centrifuge before opening to ensure complete recovery of vial contents.
- Product name:** Mosaic Treponema pallidum antigen
- Catalog number:** mosaic TP
- Description:** Mosaic Treponema pallidum antigen is a protein contains the epitopes from TP15, TP17 and TP47. It has the better performance compared to TP15, TP17 and TP47. Mosaic Treponema pallidum antigen contains 382 amino acids with 6 x his tag at its C-terminus. It migrates at 38kDa tested by 10% SDS-PAGE.
- Source:** *E. coli*
- Format:** Purified, Liquid
- Purity:** >95% pure (10% SDS-PAGE, Coomassie blue stain).
- Concentration:** 1.3mg/ml (Lot: Jan-28-2024)
- Buffer:** 25mM PBS with 25mM K<sub>2</sub>CO<sub>3</sub>
- Storage:** Store in 4°C for short time only, aliquot to avoid repeated freezing and thawing, store at -20°C.
- Applications:** Immunoassay and rapid test



New lot mosaic TP, SDS-PAGE tested on Jan 28,2024

Coated protein	20ug	4ug	0.8ug	160ng	32ng	6.4ng	1.28ng	256pg	
TP17, 09-2022	0.805	0.800	0.807	0.775	0.734	0.713	0.681	0.646	Syphilis 230101
TP17, 09-2022	0.205	0.268	0.309	0.295	0.279	0.301	0.280	0.300	Normal serum
<b>Signal / Background</b>	<b>3.93</b>	<b>2.98</b>	<b>2.61</b>	<b>2.63</b>	<b>2.64</b>	<b>2.43</b>	<b>2.43</b>	<b>2.15</b>	
TP17, 10-2021	0.804	0.819	0.772	0.753	0.602	0.549	0.438	0.479	Syphilis 230101
TP17, 10-2021	0.430	0.382	0.338	0.317	0.294	0.341	0.183	0.164	Normal serum
<b>Signal / Background</b>	<b>1.87</b>	<b>2.14</b>	<b>2.28</b>	<b>2.37</b>	<b>2.04</b>	<b>1.61</b>	<b>2.39</b>	<b>2.92</b>	

### Test two:

Coated protein	33ug	11ug	3.7ug	1.23ug	0.4ug	0.137ug	45ng	15ng	ug/ml
Mosaic TP	0.886	0.901	0.717	0.642	0.501	0.262	0.106	0.061	Syphilis 230101
Mosaic TP	0.191	0.197	0.166	0.153	0.144	0.154	0.152	0.141	Normal serum
<b>Signal / Background</b>	<b>4.53</b>	<b>4.57</b>	<b>4.32</b>	<b>4.19</b>	<b>3.48</b>	<b>1.70</b>	<b>0.69</b>	<b>0.141</b>	