

BioassayPlus Inc.

4510 Rhodes drive. Windsor, Canada N8W 5K5

Certificate of Analysis

Important note: Centrifuge before opening to ensure complete recovery of vial contents.

Catalog #: SAG2

Description: Surface antigen 2 (SAG2 or P22) of *T. gondii* is a major surface protein with the function as attachment ligand, it shows with good antigenicity and immunogenicity. rSAG2 expressed in *E. coli* contains full length amino acid sequence and 6 x his tag at its C-terminus. SAG2 was effective to detect IgG to *T. gondii* in human patients with acute toxoplasmosis. It is used as an antigen in ELISA to test *T. gondii* infection in domestic cats as well. It has been proved that rSAG2 could provide partial protection against a lethal infection of *T. gondii* and inhibited cyst formation in the brains of infected mice.

Source: *E. coli*

Format: Purified, Liquid

Purification: >95% pure (10% SDS-PAGE, Coomassie blue stain). Proprietary chromatographic technique

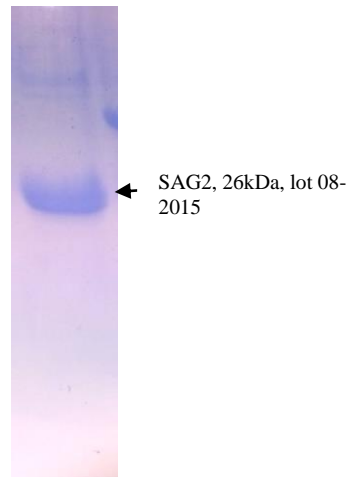
Concentration: 1.10mg/ml (lot: 08-2015)

Buffer: Phosphate buffered saline

Applications: Immunoassay

Storage: Upon receipt, store at -20°C. Avoid multiple freeze/thaw cycles.

ELISA test: the diseased sample was diluted to 1:250 for test



Coated antigen	1.6ug	0.55ug	0.185ug	62ng	20ng	7ng	2ng	0.7ng
1:250 diluted sample	0.875	0.552	0.749	0.647	0.505	0.366	0.144	0.083
Normal sample	0.053	0.023	0.011	0.022	0.017	0.017	0.014	0.022
Signal / BKG	16.51	24.00	68.09	29.41	29.71	21.53	10.29	3.77