

Bioassayplus Inc.

4510 Rhodes Dr. Windsor, Canada N8W 5K5

Certificate of Analysis

Important Note: Centrifuge before opening to ensure complete recovery of vial contents.

Catalog #: Orov-NP

Description: Oropouche virus is transmitted by midge or some mosquitoes' biting. Oropouche virus is endemic in South / Central America, and the Caribbean. Oropouche virus belongs to arboviral disease.

Oropouche virus starts with the abrupt onset of fever, severe headache, chills, myalgia, and arthralgia, 4% cases complicated with meningitis or encephalitis. Infections during pregnancy may lead to fetal death or birth defects.

We develop high-quality antigen, Oropouche Virus Nucleoprotein, it migrates at 23kDa on 10% SDS-PAGE with C terminal His tag, isoelectric point is 9.59.

Source: *E. coli*

Format: Purified, Liquid

Purification : >95% pure (10% SDS-PAGE, Coomassie Blue Staining). Proprietary chromatographic technique

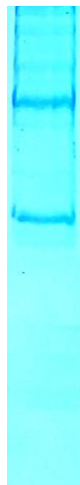
Concentration: 1.0 mg/ml (Lot: 112024)

Buffer: PBS, 25mM K₂CO₃

Applications: Immunoassay

Expiry day: One year after receiving

Storage: Upon receipt, store at -20°C. Avoid multiple freeze/thaw cycle



Dimer 48kDa, it can separate into two monomers in long term storage or by strong reducing agent, 2-mercaptoethanol. Dimer may enhance bioactivity due to its conformational structure/.

Monomer recombinant Orov NP protein
24kDa